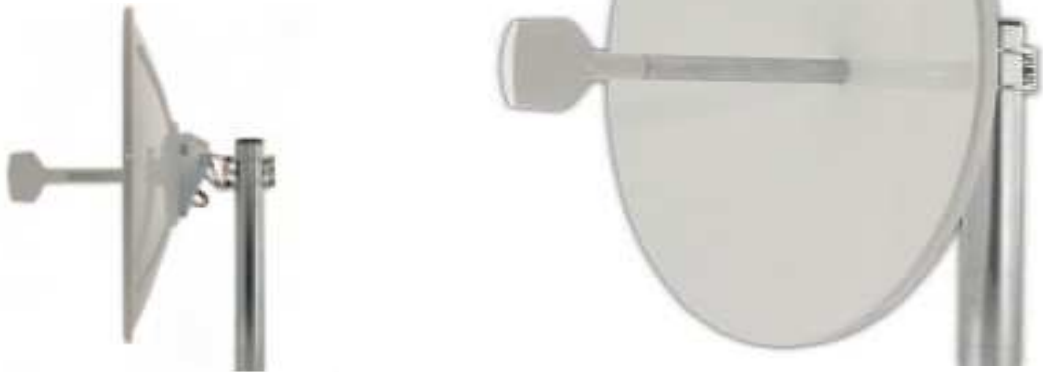


## Direct 24

Directional Parabolic Antenna



High-directional parabolic antenna working in 2,4 GHz band. It has increased resistance against the opposite polarization up to 23,59 dBi. It is suitable for using in cities.

Antenna is made of a top quality two-layer ABS/Plexiglas (PMMA) material. The features of used material enable Direct 24 to be used also in more difficult climatic conditions. Parabolic reflector was completely designed in CAD environment and his form was completed on 3D cutter with accuracy of thousandth of millimeter. Inner side of paraboloid is handled by vacuum micro layer technology. RF elements owns industrial design for using this technology.

There is a possibility to use Direct 24 in horizontal polarization or vertical polarization. High quality plastic material ensures that antenna is corrosion resistant and its lifetime is very long.

### FEATURES:

- ✓ Operating frequency 2400 – 2480 MHz
- ✓ Material ABS/Plexiglas (PMMA) + Aluminium
- ✓ Vertically or horizontally polarized
- ✓ Mounting with articulated hinge

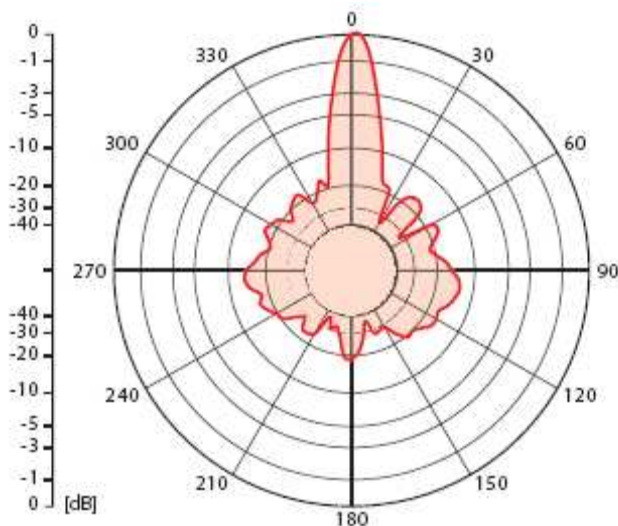
### BENEFITS:

- ✓ High gain/size ratio
- ✓ Small size & Lightweight – reduced shipping costs
- ✓ Long lifetime
- ✓ No corrosion
- ✓ Easy installation

## TECHNICAL SPECIFICATIONS:

Frequency Band	2400 - 2485 MHz
Dimensions	Diameter 500 mm
Gain	24,1 dBi
-3 dB Beamwidth	12°
Weight	1500 g
Connector	SMA reverse polarity
Operating Temperature	-30°C to +70 °C
Pole Diameter	20 - 57 mm
Material	Aluminium + ABS
Polarization	Horizontal / Vertical
Impedance	50 Ω

## ANTENNA PATTERN:



## NOTES:

- ✓ All shipments F.O.B. Bratislava
- ✓ Direct 24 carries a 2 year warranty

## PACKAGING:

- ✓ Each unit packed in one box: 52x52x10cm
- ✓ Gross weight (1pc): 2200g
- ✓ Package contents: Dish, Feeder, Mounting Bracket, Screws