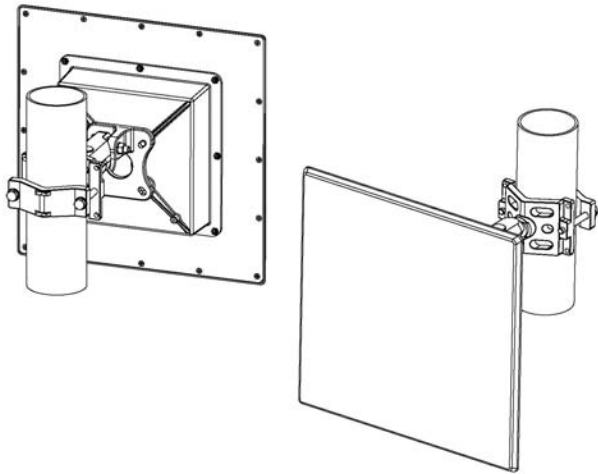


3.3-3.8GHz 18dBi Panel Antenna for ARC IES™, Integrated Enclosure Solution



- ◆ Integrates with ARC's IES™ (Integrated Enclosure Solution) SOLD SEPARATELY— Part # ARC-IE1000K01 or ARC-IE 1001K01; both include a mounting bracket
- ◆ High gain, low cost circuit design
- ◆ Low profile and rugged design for outdoor use
- ◆ Want to integrate this antenna with your enclosure? We can provide a custom backplane design for direct integration with your electronics enclosure for a low total cost CPE solution.

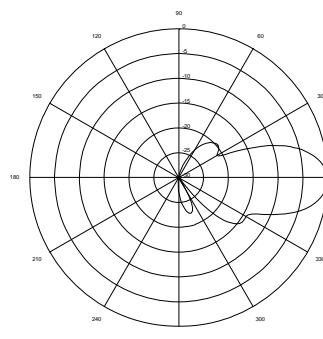
Mechanical and Environmental Specifications	
Length x Width x Depth	13.3in x 13.3in x .43in (338mm x 338mm x 10.9mm)
Weight	1.81lbs (.82kg)
Backplane	Aluminum
Radome	UV stabilized ABS plastic, gray
Wind Survivability	125mph (201kph)
Wind Load	1.23ft ² (0.12m ²)
Operating Temperature Range	-49°F to +149°F (-45°C to +65°C)
Pole Mount Diameter Range	0.75in to 3.0in (19mm to 76mm)

Electrical Specifications	
Frequency Range	3.3-3.8GHz
Gain	18dBi
3dB Beamwidth Vertical/Horizontal	22 degrees/16 degrees
Polarization	Single linear, horizontal or vertical
VSWR	≤1.7:1
Front-to-Back Ratio	≤30 dB
Cross Polarization	≤20 dB
Power Rating	6 watts max
Impedance	50 ohms
Lightning Protection	DC ground
Connector Type	R/A SMA

Ordering Information	
Part #	Description
ARC-IA3518B07	3.5GHz 18dBi, R/A SMA Flange Mount Jack

Shipping Information	
Sizes and Weights	Description
30.26in x 16.68in x 16in (769mm x 424mm x 406mm) 48lbs (21.77kg)	Bulk Pack, includes 20 single packs in an overpack box

RF Patterns
Vertical Cut, typ.



RF Patterns
Horizontal Cut, typ.

