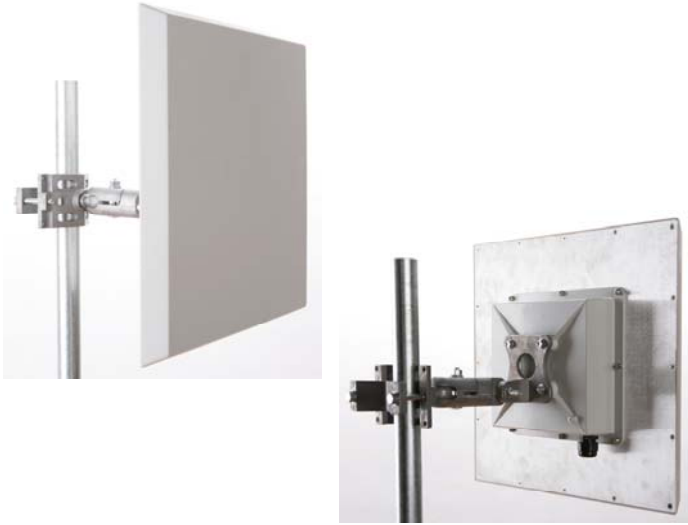


## 2.3-2.5GHz 19dBi Panel Antenna for ARC IES™, Integrated Enclosure Solution



- ◆ High gain, low cost circuit design
- ◆ Low profile and rugged design for outdoor use
- ◆ US Engineered
- ◆ Manufactured under strict US quality control procedures
- ◆ Fits with ARC's IES™, Integrated Enclosure Solution SOLD SEPARATELY— Part # ARC-IE1001K02 or ARC-IE2000K01 (Gen II); both include ARC ABS™, Articulating Bracket Solution
- ◆ Custom Enclosures Available

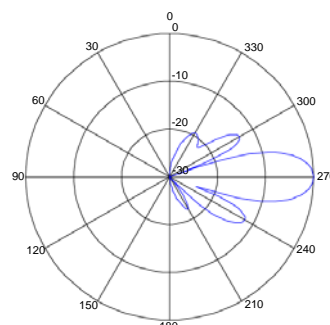
Mechanical and Environmental Specifications	
Length x Width x Depth	15.4in x 15.4in x 1.7in (391mm x 391mm x 43mm)
Weight	2.8lbs (1.3kg)
Backplane	Aluminum
Enclosure	Gray, Powder-coated die-cast aluminum
Radome	Gray, Injection Molded UV stabilized ABS plastic
Wind Survivability	125mph (201kph)
Wind Load	1.65ft <sup>2</sup> (0.15m <sup>2</sup> )
Operating Temperature Range	-49°F to +149°F (-45°C to +65°C)
Pole Mount Diameter Range	0.75in to 3.0in (19mm to 76mm)

Electrical Specifications	
Frequency Range	2.3-2.5GHz
Gain	19dBi
3dB Beamwidth Vertical/Horizontal	18deg/18deg
Polarization	Single linear, horizontal or vertical
VSWR	≤1.5:1 typ., ≤1.7:1 max.
Front-to-Back Ratio	>30 dB
Cross Polarization	>30 dB
Power Rating	30 watts
Impedance	50 ohms
Lighting Protection	DC ground
Connector Type	R/A SMA Jack

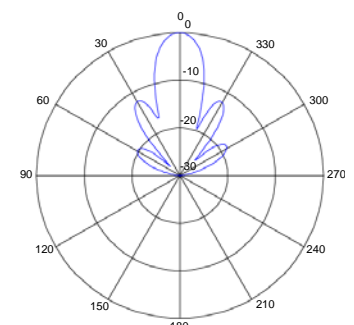
Ordering Information	
<u>Part #</u>	<u>Description</u>
ARC-IA2419B02	2.3-2.5GHZ 19dBi, R/A SMA Jack

Shipping Information	
<u>Sizes and Weights</u>	<u>Description</u>
18.63X15.31X15.25 (47.3cm x 38.9cm x 38.7cm) 34lb, (15.4kg)	Bulk pack includes 10 antennas in an overpack box

RF Patterns  
Vertical Cut, typ.



RF Patterns  
Horizontal Cut, typ.



[www.antennas.com](http://www.antennas.com)