

85010090001 - 3.3 to 3.8 GHz 90° Beamwidth Sector Antenna

This WiMAX antenna is designed to cover frequencies from 3300 to 3800 MHz. It offers excellent port to port isolation of 30 dB typical, with a VSWR of less than 1.5 in a rugged, off-white UV resistant radome.

Features:

- Outstanding port to port isolation of 30 dB typical;
- VSWR of less than 1.5;
- Great upper side lobe suppression;
- Adjustable scissors-style pipe mount bracket with 0-10° downtilt.

Electrical Specifications

Frequency	Nominal Gain	Azimuth Beamwidth	Elevation Beamwidth
3300-3500 MHz	15.5 dBi	90° +/- 5°	7°
3500-3800 MHz	16.0 dBi	90° +/- 5°	7°

Mechanical Specifications

Temperature Range	Dimensions (LxWxD)	Weight (Mass)	Wind Survivability
-40°C to 65°C storage / -40°C to 65°C operating	28" x 6.7" x 3.5" (711 x 171 x 90 mm)	7 lbs (3.1 kg)	125 mph (200 km/h)

Technical Data

Polarization: Linear dual slant +/- 45°

Nominal Impedance: 50 ohms

VSWR: < 1.5

Front to Back Ratio: > 25 dB

Port to Port Isolation: 30 dB typical

Upper Side Lobe Suppression: 30 degrees above horizon: > -15 dB

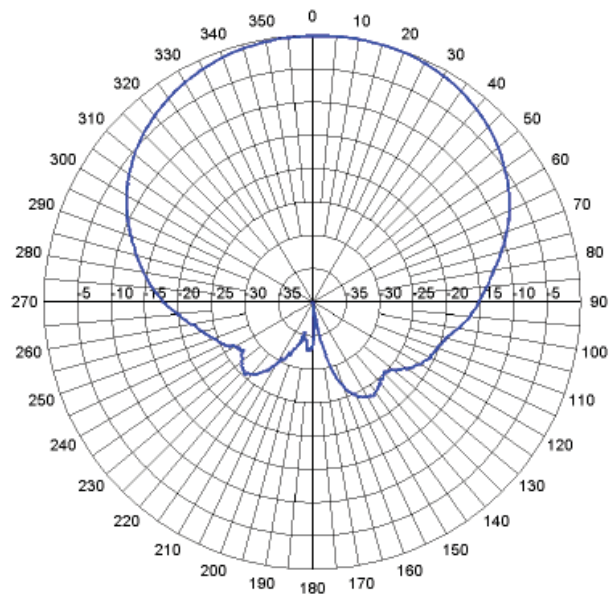
Radome Material: Gray UV resistant plastic

Connector: Type N female

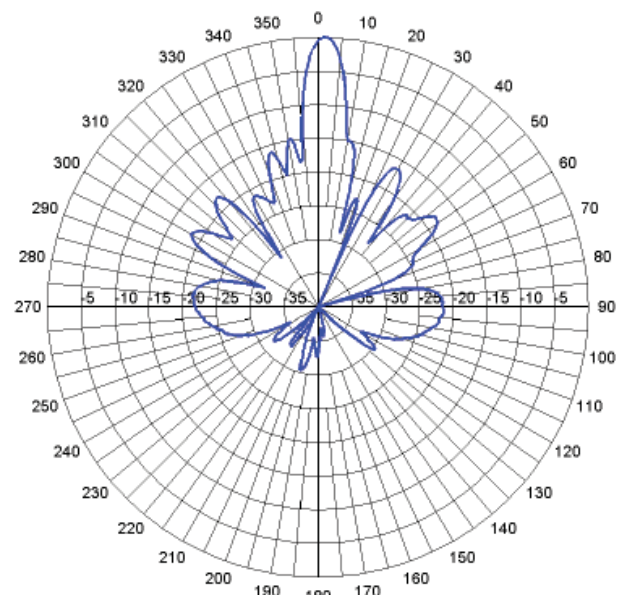
Mounting Method: Adjustable pipe mount bracket (included)

Mount Material: Nickel Zinc Trivalent Plated Steel (RoHS Compliant)

Radiation Patterns



Azimuth plane



Elevation plane