

EXPERIENCE THE FREEDOM OF WIRELESS NETWORKS  
FOR ENTERPRISE GUEST ACCESS AND THE PUBLIC HOTSPOT



## ORiNOCO® AP-2500 Access Point Family



The ORiNOCO AP-2500 is a powerful dual radio access point and access gateway. Supporting both 2.4GHz and 5GHz clients, it enables large and small public hotspot sites to offer the convenience of “anywhere, anytime” wireless connectivity to subscribers. For enterprises, the AP-2500 lets you offer easy Internet access to office guests. Part of the world’s most popular family of wireless LAN infrastructure solutions, the ORiNOCO AP-2500 delivers unsurpassed wireless mobility and convenience.

### Broadband Wireless Networking for the Enterprise and Public Hotspot

The ORiNOCO AP-2500 is an all-in-one wireless access point and access gateway specifically designed for public hotspot providers and enterprises. It enables enterprises to offer corporate visitors immediate wireless network access regardless of their existing network or ISP settings. Dynamic address translation (DAT™) automatically maps local PC settings, saving visitors from having to temporarily change the settings on their PCs.

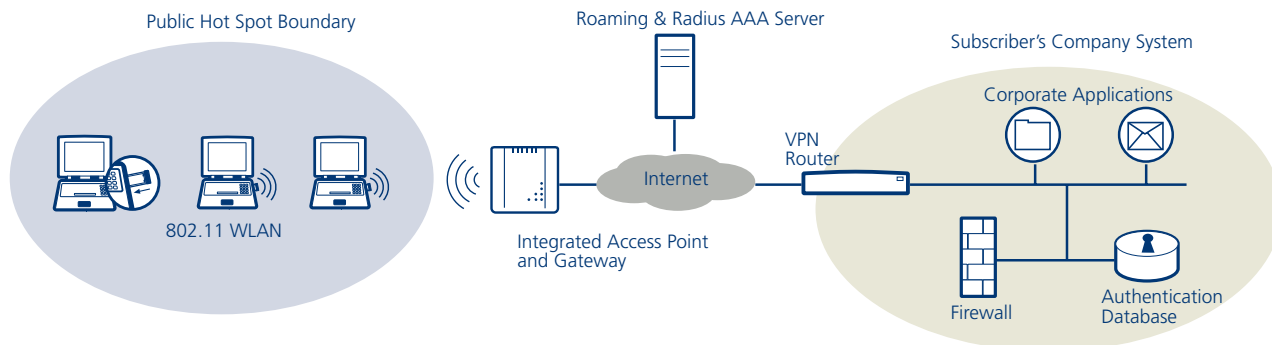
For public hotspots, the AP-2500 delivers seamless connectivity, high security, flexibility and standards-based authentication and billing systems support. Eliminating the need to purchase separate gateways and access points, it significantly cuts hardware and installation costs for both venue owners and service providers. The AP-2500 authenticates users based on various methods and allows for seamless roaming between hotspots. Standards-based Radius Authentication, Authorization and Accounting (AAA) attributes easily tie into billing systems, allow on-the-spot customer acquisition, and support varied service offerings, such as pay-per-use or fixed fee subscriptions. Offering various levels of security, the ORiNOCO AP-2500 has all the capabilities you need to prevent eavesdropping between stations and to allow subscribers to set up secure VPN connections.

### APPLICATIONS

- Carriers and Wireless Service Providers: expand customer base, extend network reach, penetrate new markets, increase ARPU
- Public venues (restaurants, hotels, chain stores, etc.): increase revenues, capitalize on unique selling proposition of diversified WLAN services
- Enterprises: enable visitors to wirelessly connect to their own VPN and the Internet

### FEATURES

- Dual slot architecture, supporting both 2.4GHz and 5GHz standards
- Transparent connectivity
- Broad management capabilities, including Web-based, full SNMP management
- Centralized remote management for networks with many Access Points
- Radius accounting features for public hotspots
- Bandwidth Shaping and Dynamic Bandwidth Management



## About Proxim

Proxim Corporation is a leading manufacturer of high-performance wireless local area networking (WLAN) and wireless wide area networking (WWAN) products. Proxim's ORiNOCO line of products encompasses a full range of indoor and outdoor WLAN products, as well as enhanced security products for public areas and security-conscious enterprises. Proxim sells its ORiNOCO products and solutions to service providers, enterprise customers and end-users via a network of leading OEM partners, a vast array of value-added resellers, and several e-commerce sites.

## ORiNOCO AP-2500 Specifications

### WIRELESS

802.11a support	50 users per radio	
802.11b support	250 users per radio	
Interference robustness	Monitoring Wi-Fi station status	
Fragmentation	Power Management support	Auto Channel Selection
Link test responder	Wireless Distribution System	AP list in Client Manager
Remote link test	Cell density settings (Ultra high, High, Medium, Low)	

### NETWORKING

DHCP Client & Server	Access Control table	VLAN (2 user segments)
802.1d bridging	Network Protocol filtering	ICMP Echo response

### CONFIGURATION & MANAGEMENT

Remote Administration	TFTP	SNMP IP Access List
Secure Administration	SNMP v1 & V2c	Syslog
Telnet CLI	SNMP Traps	
MIB-II, Bridge MIB, Ethernet MIB, ORiNOCO MIB, 802.11 MIB, Nomadix MIB		

### SECURITY

WEP	Transparent connectivity	E-mail redirection
WEP Plus – Weak key avoidance	Dynamic Address Translation	DNS redirection
Intracell traffic blocking	Transparent HTTP Proxy	Microsoft Netmeeting Support
Closed system	PPTP Support	Microsoft Netmeeting Support
VPN Passthrough for IP Sec and PPTP	IP Sec Shared Key Authentication	SMTP redirect

### AUTHENTICATION AND BILLING

Authentication based on universal access method, Smart Client (iPass, GRIC, Boingo)		
HTTPS and SSL Support	Dynamic Billing Selection	Radius AAA Client
AAA Passthrough Port	XML Support	Radius Portal Redirect
Cookie Placement	Billing Records "Mirroring"	Automatic User Tracking, Billing and Security
Credit Card Billing	Authorized subscribers (Trusted users)	Specify Radius by host name using DNS

### LOCAL SERVICE PRESENTATION

Information and Control Console (ICC)	Home Page Redirection	Selective Access Control (Walled Garden)
IP Upsell	URL Filtering	Connection Screen and Partner Image
Flexible Screen Size and JAVA Detect	Internal Web Server (IWS)	External Web server (EWS)

### BANDWIDTH MANAGEMENT

Bandwidth Shaping (and Dynamic Bandwidth Management)

www.proxim.com



Proxim Corporation  
935 Stewart Drive  
Sunnyvale, California 94085

tel: 800.229.1630  
tel: 408.731.2700  
fax: 408.731.3675

Wi-Fi is a trademark of the Wireless Ethernet Compatibility Alliance, Inc. Windows and Windows Me are registered trademarks of Microsoft Corporation. DAT is a trademark of Nomadix.

©2003 Proxim Corporation. All rights reserved. ORiNOCO is a registered trademark, and Proxim and the Proxim logo are trademarks of Proxim Corporation. All other trademarks mentioned herein are the property of their respective owners. Specifications are subject to change without notice.



0018-0203