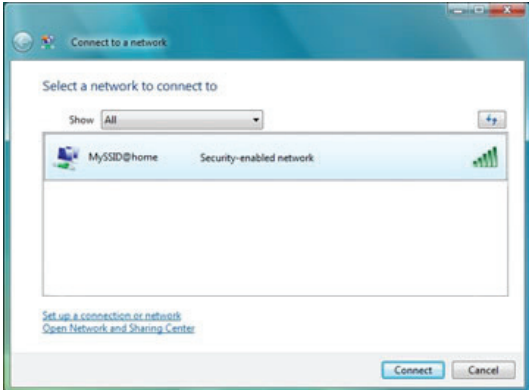


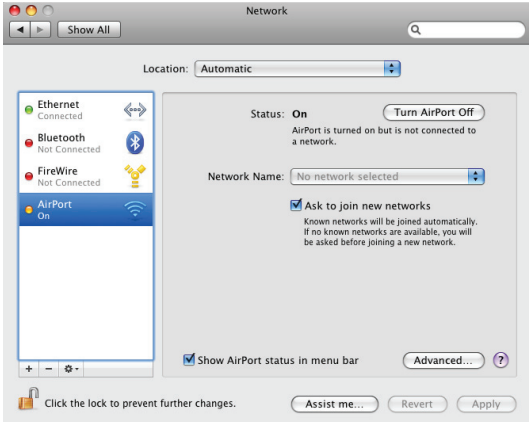
## Microsoft Windows Vista

- 1 Go to **Start Menu > Control Panel > Network and Sharing Center**. Select **Connect to a network** in the left-hand column, and the **Network Connection** window will appear.
- 2 Select the **MySSID@home** in the list of available wireless networks, and then click **Connect** at the bottom right-hand corner of the window.
- 3 In the field **Security key or passphrase**, enter the Encryption Key value that is previously entered when configuring the Surf AP unit. Then, click **Connect** to establish connection.
- 4 Upon successful connection, check the options **Save this network** and **Start this connection automatically**. This allows your computer to connect to Surf AP automatically when turned on. Click **Close** to end the setup.



## Apple Mac OS X

- 1 From the menu, select **System Preferences** and then click on the **Network** icon.
- 2 For the field **Location**, select **Automatic**. Then, select **AirPort** in the left-hand column. If AirPort is not already turned on, click on button **Turn AirPort On** to turn it on.
- 3 In the field **Network Name**, select **MySSID@home**. A dialog box will then prompt for the Password. In the **Password** field, enter the Encryption Key value that is previously entered when configuring the Surf AP unit. Click **OK** to establish connection.
- 4 Upon successful connection, click the **Apply** button at the bottom right-hand corner of the dialog box to end the setup.



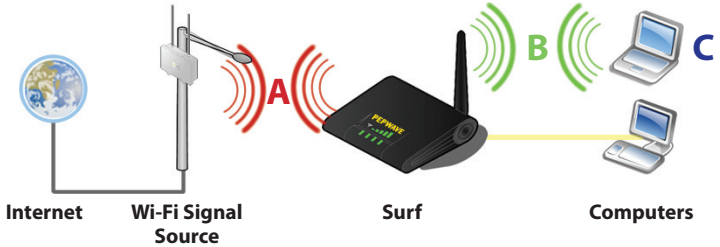
## 1 Getting Started



- Antenna**  
Connect the antenna to the Surf unit by screwing it clockwise into the antenna jack.  
\*Your antenna connector may look different.
- Ethernet**  
Insert one end of the Ethernet cable into the Surf's LAN port, and the other end into your computer's Ethernet Port.
- Power Adapter**  
Plug the power adapter into the Surf's DC port, and then connect it to the nearest power outlet.

## 2 Configurations

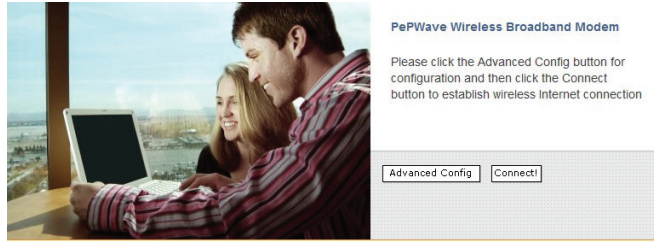
The figure shown below is a typical network setup for Surf. Your network setup may vary. Follow the steps below to configure your device properly.



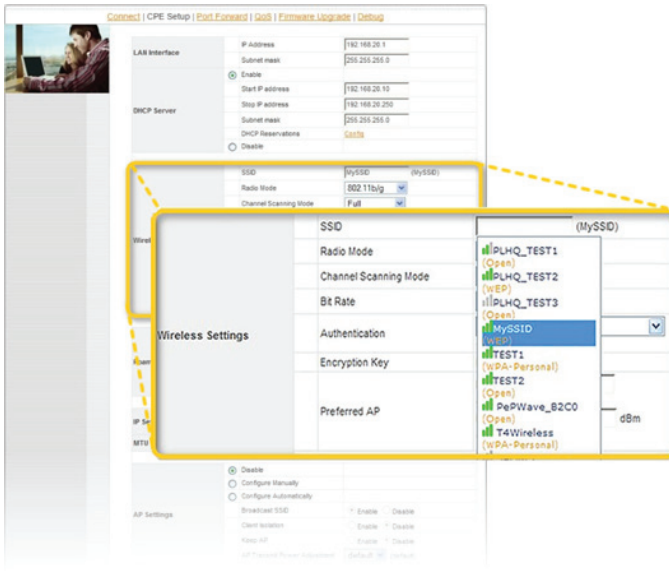
- A Wi-Fi Settings Configuration**  
Setup your Surf to receive Wi-Fi signal
- B Integrated Home AP Configuration (Surf AP only)**  
Setup your Surf to broadcast a local Wi-Fi Signal
- C Connect to Surf using Wi-Fi (Surf AP only)**  
Setup your computer to receive Surf's Wi-Fi Signal

# A Wi-Fi Settings Configuration

1 Open a web browser and enter the URL <http://192.168.20.1>. Upon successful connection, the **Welcome Screen** will be displayed.



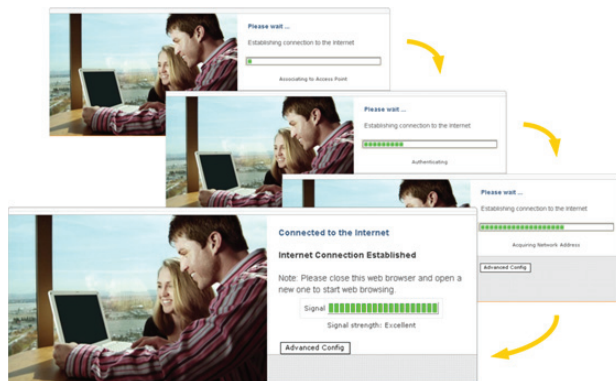
2 Click on **Advanced Config** button. In the section **Wireless Settings**, edit the **SSID** field from the default value of **MySSID** to the SSID specified by the Wireless Internet Service Provider. Otherwise, you may change this field to a blank value, and select a specified SSID from the list of SSIDs shown along with the corresponding encryption and signal strength.



3 In the section **Wireless Settings**, from the **Authentication** drop-down menu, select a value that matches the authentication setting value specified by the Wi-Fi Internet Service Provider. Then, if applicable, enter the **Encryption Key** value provided.

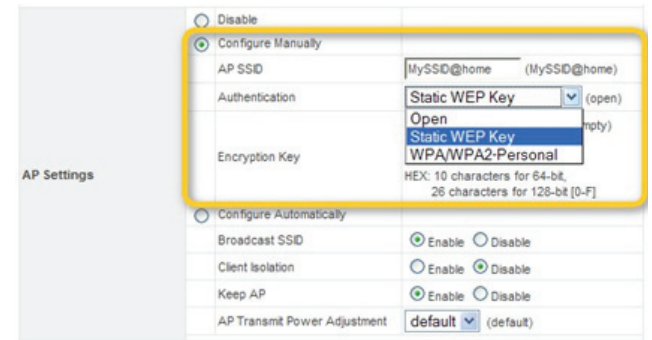
4 Click **Save** at the bottom right-hand corner of the page **CPE Setup**. Upon successful connection, go to the page **Connect**, and the **Connection Screen** indicating signal strength level will be displayed.

5 Test the Wi-Fi Connection. At this point, all of the LEDs on the Surf unit should be lit up and in green:  
Power – **Solid Green**  
Status – **Solid / Flashing Green**  
LAN – **Solid / Flashing Green**  
Wi-Fi – **Solid / Flashing Green**  
Signal Bars – The number of lit signal bars depends on the strength of the received signal.



# B Integrated Home AP Configuration

1 Upon successful connection to the Internet, click on **Advanced Config** button. In the section **AP Settings**, select **Configure Manually**.



2 In the **AP SSID** field, enter a value by which the home Wi-Fi network is to be identified. For illustrative purposes, the default AP SSID value **MySSID@home** will be used throughout this guide.

3 From the **Authentication** drop-down menu, select **Static WEP Key** or **WPA/WPA2-Personal**.

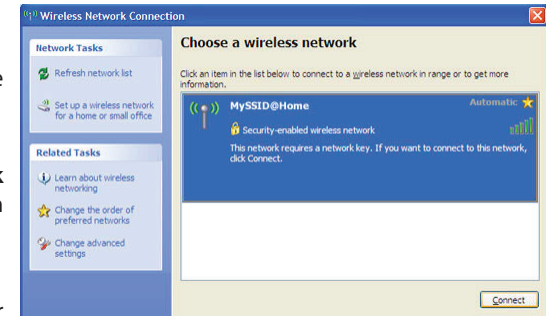
4 In the **Encryption Key** field, enter at least 5 characters for **Static WEP Key** authentication or at least 8 characters for **WPA/WPA2-Personal** authentication.

5 Click **Save** button at the bottom of the page. You can now disconnect the Ethernet cable from the host PC.

# C Wi-Fi Enabled Host PC Configuration

## Microsoft Windows XP

1 Go to **Start Menu > Control Panel > Network Connections**. Right click on the **Wireless Network Connection** icon, and select **View Available Wireless Networks**. The **Wireless Network Connection** window will appear.



2 Select the **MySSID@home** in the list of available wireless networks.

3 Click **Connect** button in the **Wireless Network Connection** window. A dialog box will then prompt for the **Network Key**.

4 In the fields **Network Key** and **Confirm Key**, enter the Encryption Key value that is previously entered when configuring the Surf AP unit. Then, click **Connect** at the bottom right-hand corner to establish connection.