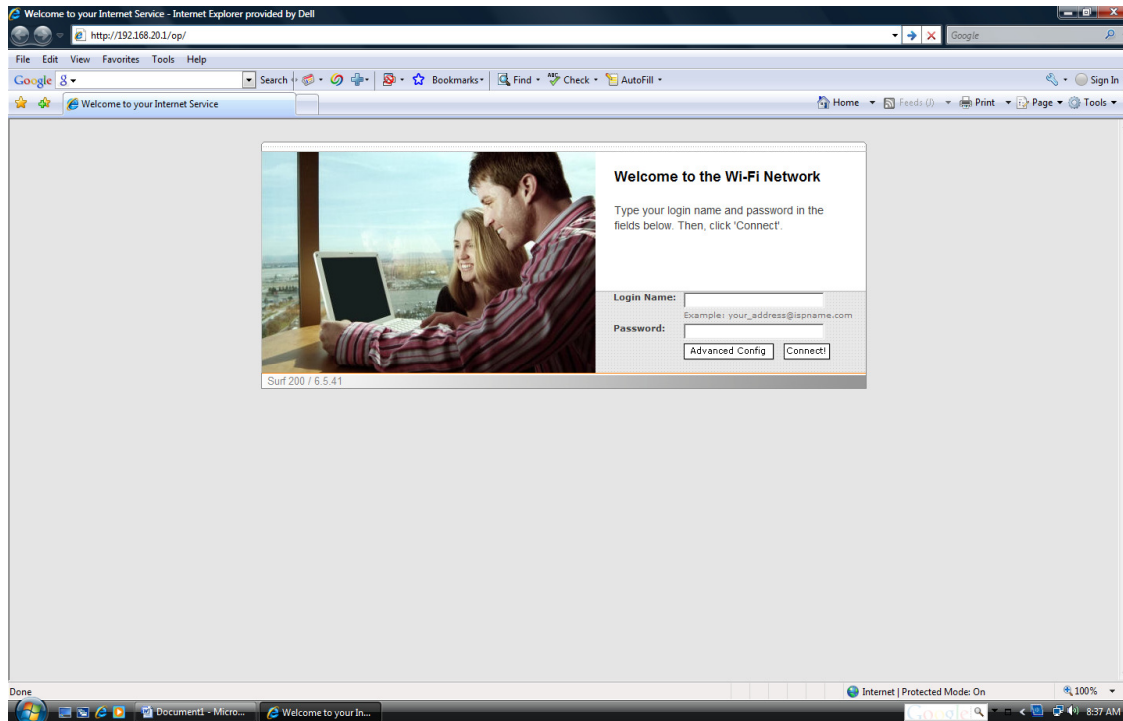


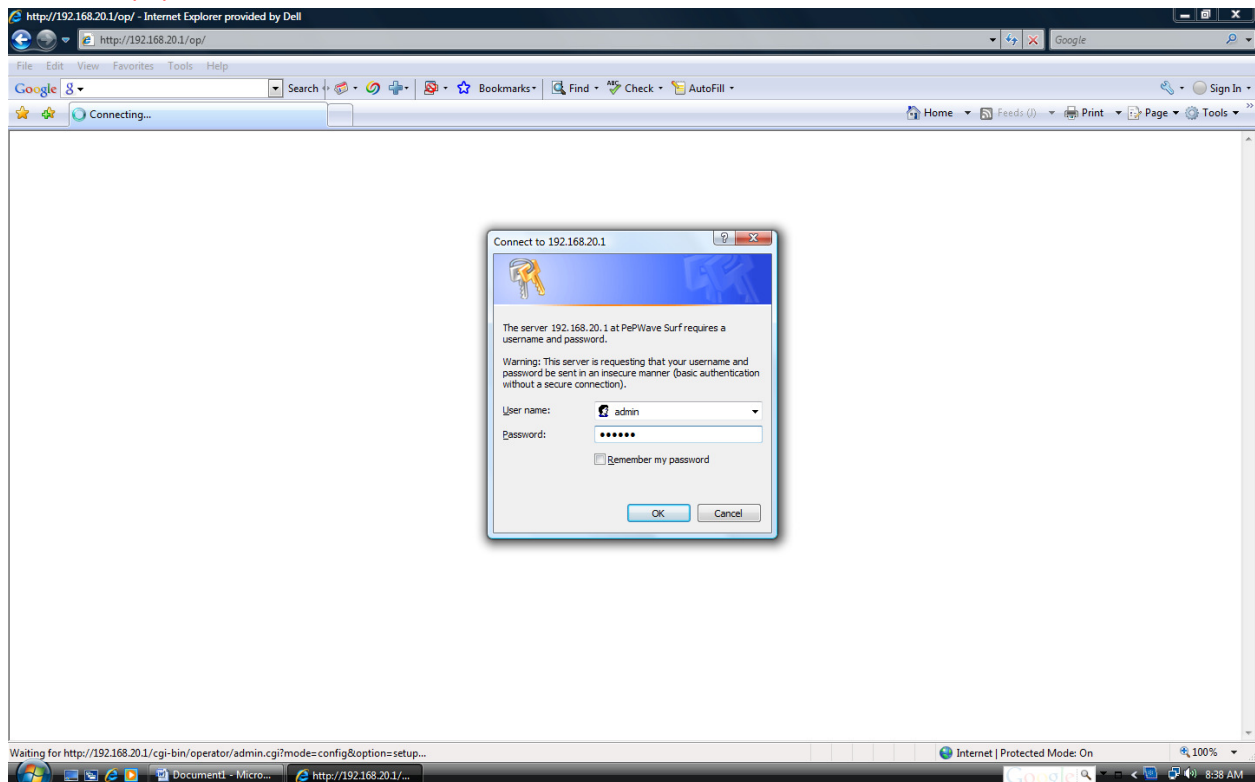
Setup Instructions for Pepwave Surf 200BG LED Version

1) Enter **192.168.20.1/op/** in browser address bar and click enter.

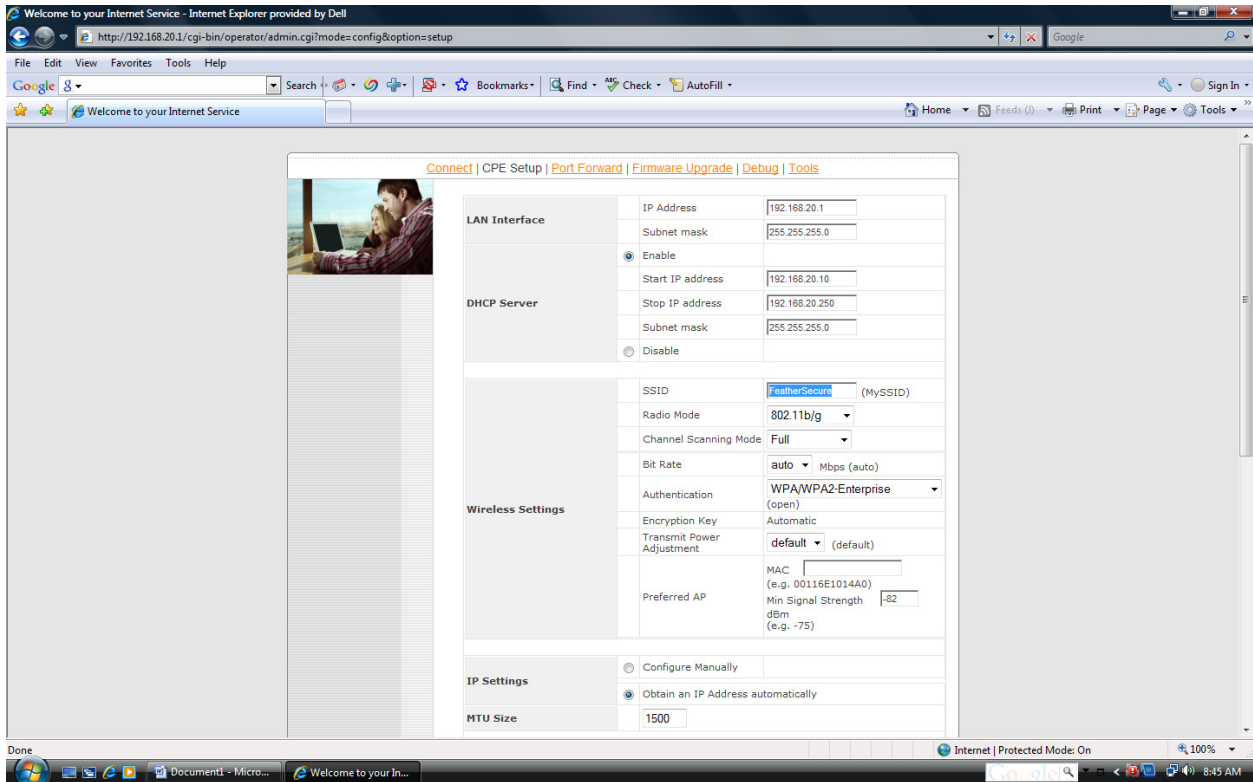


2) Enter Username: **admin**

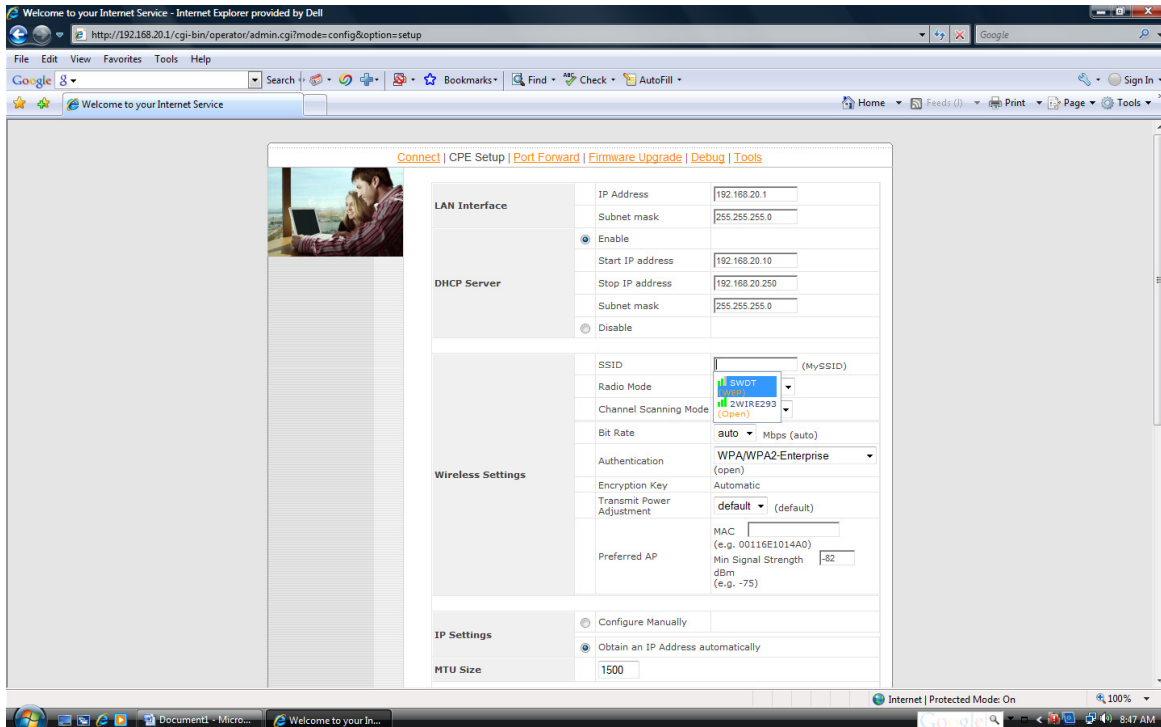
Password: **pep888**



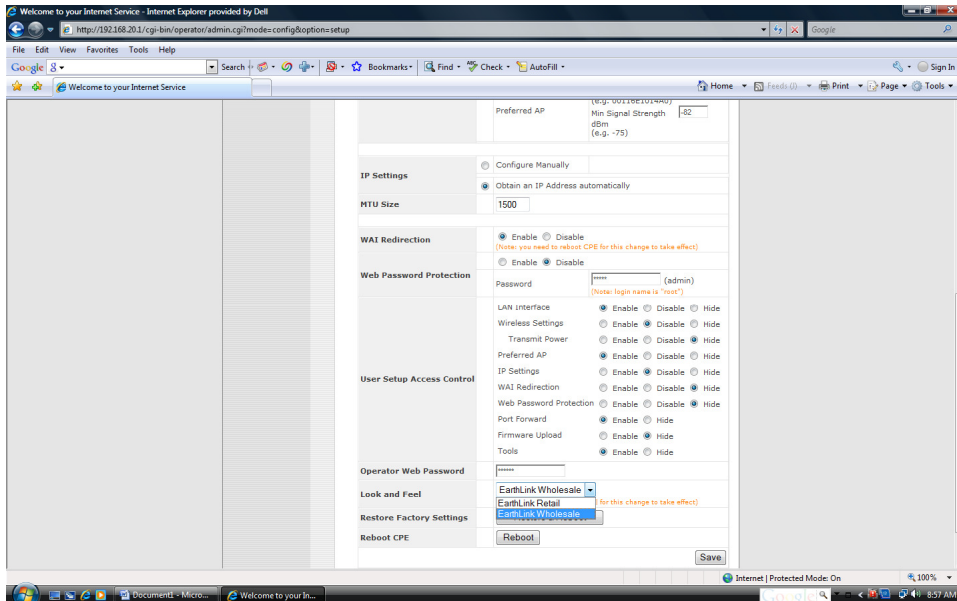
3) Remove “FeatherSecure” from (MySSID) by holding down the mouse key and highlighting it, then hit “delete”



4) Available wireless SSID's at your location will now be displayed. Select the SSID of your service provider. Check with your provider for recommended “Authentication” settings



5) “Look and Feel” Use this setting to change to Earthlink Wholesale to remove any references to Earthlink in the Web Browser set up pages.



6) Click on “Save”, then “Reboot”. Unit will reboot after a few minutes and you will see the following screen showing you are connected. (If not connected, click on “CONNECT”) **Once connected EXIT YOUR BROWSER. Re-open your browser and you are ready go!**

