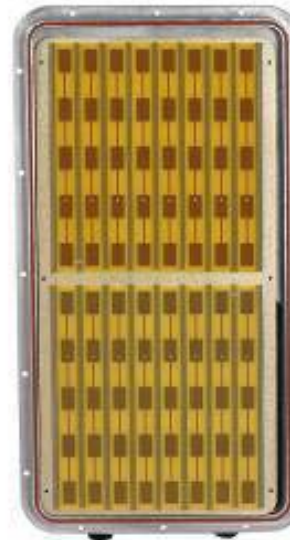


SkyGateway Pro (SP-5000)

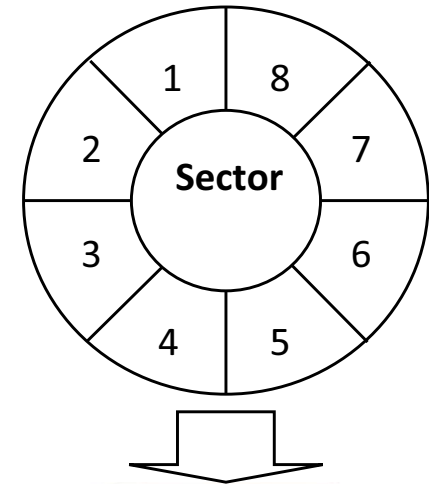
- **Increase Network Capacity with Beam Steering**
 - Beam switching between eight 15° beams (total 90° coverage)
 - High link budget increases capacity into network
 - 22 dBi beam + 30 dBm radio = 52 dBm / 158 W EIRP
 - Increases first-hop modulation rates to ensure higher capacity
 - Narrow beams improve spectral reuse & interference mitigation
 - Capacity up to 20 Mbps per SkyGateway Pro
- **Gateway Synchronization Increases Tower Capacity**
 - 90° coverage → 4 SkyGateway Pros per channel per tower
 - Multi-gateway synchronization → Up to 80 Mbps/channel
- **Other**
 - Increases VoIP call capacity from 70 to 250
 - Optional small form-factor pluggable (SFP) fiber interface
 - 48 VDC power supply
 - Tilttable mounting options
- **Pricing & Availability**
 - \$4,499 (shipping in June)



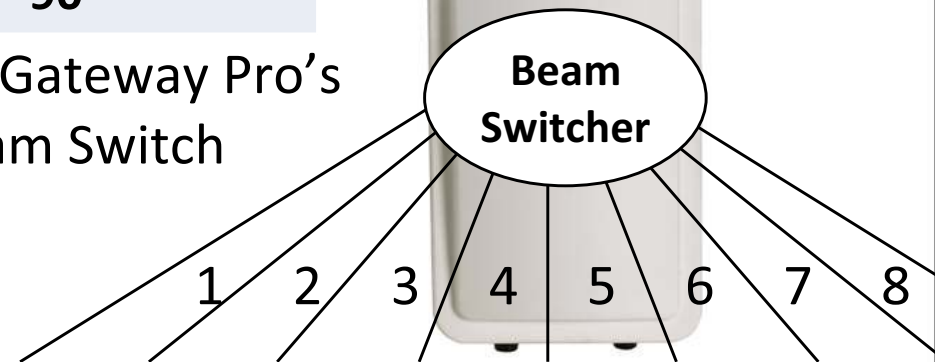
Dynamic, Switchable Beam Steering

	SkyGateway	SkyGateway Pro
Type	Sectorized antenna	Steerable beam
Number	8	8
Selection	Sector Switch Synchronized dynamic switching coordinated by SyncMesh	Beam Switch Synchronized dynamic switching coordinated by SyncMesh
Gain	18 dBi	22 dBi
Azimuth/elevation	45°/6°	15°/8°
Total coverage	360°	90°

SkyGateway's Sector Switch



SkyGateway Pro's Beam Switch

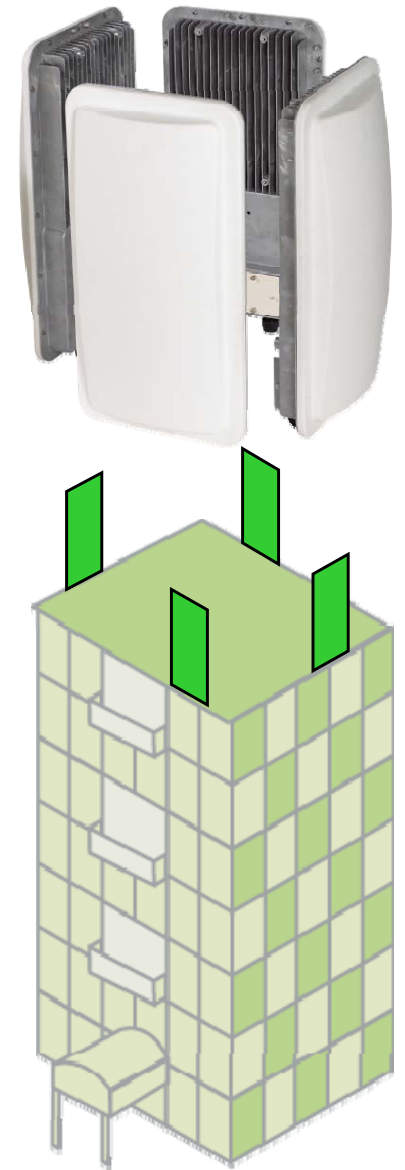


Multi-Gateway Synchronization

Increases tower channel capacity

- **80 Mbps Per Channel with Synchronization**
 - Capable of 1:1 spectral reuse pattern
 - 4X SkyGateway Pros per channel → 360° coverage
 - Synchronized and coordinated same-channel communications provides up to 4X capacity
 - Up to 80 Mbps per channel per tower
 - Up to 1,000 VoIP calls per channel per tower

Note: maximizing capacity and minimizing co-channel interference requires proper RF planning and horizontal spacing and placement (i.e. sides of a building)



Channel “Layering” to Scale Capacity

- **Efficient Usage of Non-Overlapping Channels**
 - Up to 4 SkyGateway Pros synchronized per channel
 - “Layer” capacity on non-overlapping channels
 - Note: SkyGateway Pros synchronize with same-channel systems but not to SkyGateway Pros on adjacent channels
- **Practically Increasing Capacity Per Tower**
 - Flexible mix of available channels and directionality
 - Capacity and VoIP calls scale linearly with the number of SkyGateway Pros used per tower

Note: maximizing capacity and minimizing co-channel and adjacent channel interference requires proper RF planning, horizontal spacing and placement (i.e. sides of a building), and vertical spacing

