

# Motorola Wireless Broadband Point-to-Multipoint 430 Access Point and Subscriber Module



**CAP 430  
Access Point**

The Motorola Wireless Broadband Point-to-Multipoint (PMP) 430 Access Point and Subscriber Module is the ideal solution for developing, enhancing and extending advanced broadband networks for data transfer, voice and video applications. The 430 Access Point and Subscriber Module provide wireless Line of Sight (LOS) and near Line of Sight (nLOS) broadband connectivity in the 5.4 GHz and 5.8 GHz spectrum.

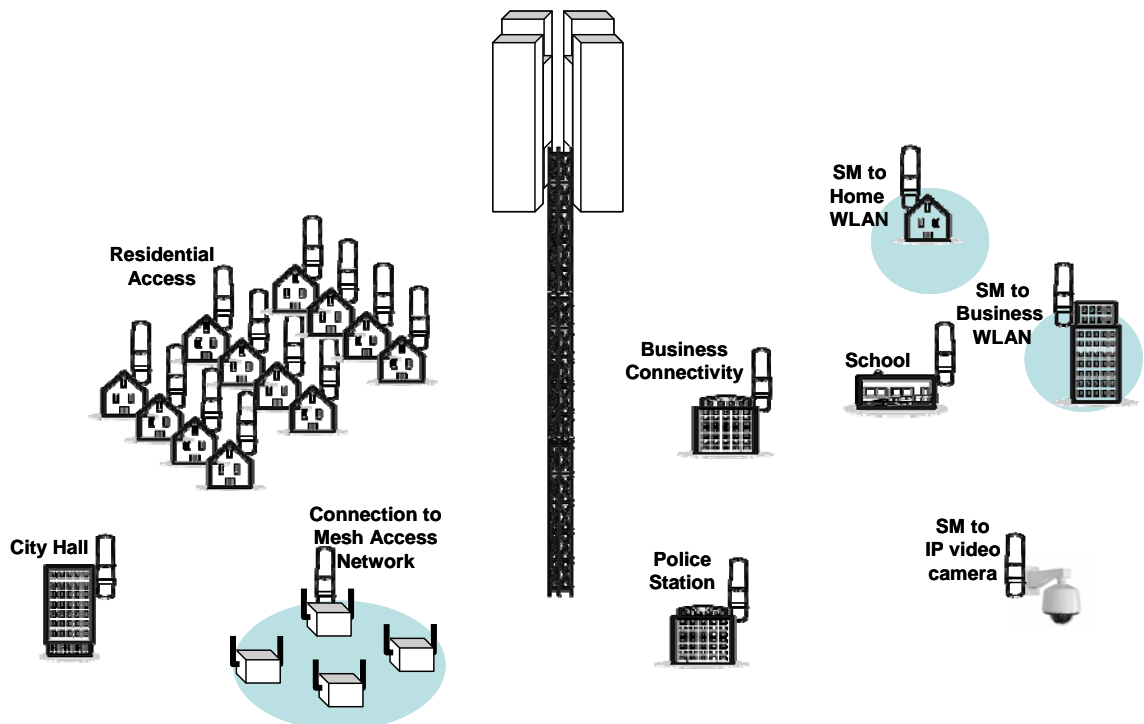
Motorola Wireless Broadband products combine field-proven toughness with exceptional performance, security, ease-of-use and cost effectiveness. PMP 430 Series Access Point and Subscriber Modules are available with total throughputs up to 40 Mbps for data, video and voice applications. PMP 430 Subscriber Modules can be purchased with throughputs of 4, 10, 20 or 40 Mbps and throughput can be enhanced to existing modules via a fixed software license.



**CSM 430  
Subscriber Module**

The PMP 430 Access Point can be co-located on the same tower location with other Motorola PMP Access Point solutions. The user guide provides details on co-location planning and network design considerations.

## PMP ACCESS AND DISTRIBUTION NETWORK



**SPECIFICATION SHEET**  
**Point-to-Multipoint 430 Access Point and Subscriber Module**

**Motorola Wireless  
Broadband Solutions**

Motorola's comprehensive portfolio of reliable and cost-effective wireless broadband solutions together with our WLAN solutions provide and extend coverage both indoors and outdoors. The Motorola Wireless Broadband portfolio offers high-speed Point-to-Point, Point-to-Multipoint, Mesh, WiFi and WiMAX networks that support data, voice and video communications, enabling a broad range of fixed and mobile applications for public and private systems. With Motorola's innovative software solutions, customers can design, deploy and manage a broadband network, maximizing uptime and reliability while lowering installation costs.

<b>CAP 430</b>		
<b>ACCESS POINT</b>	<b>CAP 54430</b>	<b>CAP 58430</b>
<b>PERFORMANCE</b>		
Typical Aggregate Useful Throughput	20 Mbps maximum Access Point and Subscriber Module hardware capable to support 40 Mbps	
One Way Latency	3.5 msec	
Mean Time Before Failure	40 years	
Modulation Type	QPSK (3/4), 16QAM (3/4), 64QAM (3/4)	
Access Method	Time Division Duplexing/Time Division Multiple Access (TDD/TDMA)	
<b>SPECTRUM</b>		
Frequency Range	5.47-5.725 GHz	5.725-5.875 GHz
Channel Width	10 MHz – hardware capable to support 20 MHz channels	
<b>SECURITY</b>		
Encryption	DES, FIPS 197 Certified AES Option	
<b>LINK BUDGET</b>		
Antenna Gain (dBi)	Access Point: 17 dBi Subscriber Module: 10 dBi	
Maximum EIRP (dBm)	30 dBm	36 dBm
<b>ANTENNA</b>		
Antenna Beam Width	90 degree sector width	
Polarization	Vertical	
<b>PHYSICAL</b>		
Temperature	-40° F to +131° F (-40° C to +55° C)	
Wind Survival	118 miles/hr (190 km/hr)	
Dimensions	Access Point (with antenna): 28.75" H x 8.25" W x 11" D (73cm H x 20.96cm W x 27.94cm D) Access Point (module only): 13.74" H x 8.70" W x 4.21" D (349mm H x 221mm W x 107mm D) Subscriber Module: 11.75 in H x 3.4 in W x 3.4 in D (29.9cm H x 8.6cm W x 8.6cm D)	
Weight	Access Point: 13.5 lb (6.1 kg) Subscriber Module: .45 kg (1 lb)	
<b>INTERFACE</b>		
Interface	10/100 Base T, half/full duplex. Rate auto negotiated (802.3 compliant)	
Protocols Used	IPV4, UDP, TCP, ICMP, Telnet, HTTP, FTP, SNMP, PPPoE	
Network Management	HTTP, TELNET, FTP, SNMP Version 2c	
<b>CERTIFICATIONS</b>		
FCC ID	TBD	TBD
Industry Canada Certification Number	TBD	TBD



**MOTOROLA**

Motorola, Inc. 1301 E. Algonquin Road, Schaumburg, Illinois 60196 U.S.A. [www.motorola.com/pmp](http://www.motorola.com/pmp)

Specifications subject to change without notice. MOTOROLA and the stylized M Logo are registered in the U.S. Patent and Trademark Office. All other products or service names are the property of their registered owners. © Motorola, Inc. 2009