



The Avaya P130 Workgroup Switches

Business demands require multi-featured workgroup switching that is affordable and requires minimal technical support. The Avaya P130 family of products provides just that. Deployment of any Avaya P130 switch requires just one step: plugging it in. Management is just as straightforward, making configuration and monitoring simple. The Avaya P130 Workgroup Switch gives you the power, value, and ease of use you need at the desktop.

Scalability and Performance

Workgroup switches need to be designed to provide reliable, non-blocking, high-density connectivity to the desktop. The Avaya P130 Workgroup Switches are designed with those key factors in mind. The Avaya P130 Workgroup Switches provide 24/48 Fast Ethernet port options as well as 100BASE-FX, Gigabit Copper or GBIC ready Gigabit Ethernet uplinks.

As your network expands, “manageable scalability” becomes a significant factor for many businesses. IT Managers can enhance manageability of high-density desktop environments by taking advantage of the Avaya P130 family’s “single IP” stacking feature. Up to four switches can be stacked and managed as a single IP entity, making the IT department’s job more efficient. In a “cascading”

switch configuration, the Avaya P133G2 and Avaya P134G2 provide a 2 Gbps stack bus, supporting up to 192 10/100 Ethernet ports for optimum scalability, throughput and performance.

Multimedia and IP Telephony Ready

The Avaya P130 switches are “Day One” Ready for Voice, Video, and Data Convergence Networking. The Avaya P130 products offer application optimization features that increase the longevity of your desktop switching investment.

The Avaya P130 Workgroup Switches have all the features required for the network edge:

- Quality of Service
- Priority support per port. Transparent IEEE 802.1p
- 802.1Q VLAN and Port based VLANs
- Congestion Control
- IP Multicast filtering
- Link Redundancy



Avaya P134G2 Workgroup Switch



- Link Aggregate Group (LAG)
- LAG Redundancy
- IEEE 802.1d Spanning Tree
- Policy-based networking

Flexible Management

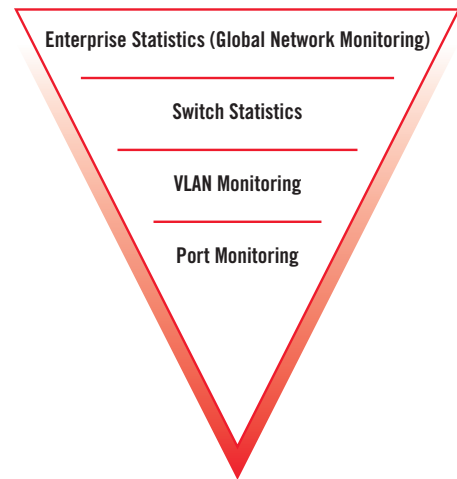
The Avaya P130 family of switches can be managed, based on your business preference, staff skills, and business need. All Avaya switches can be managed at the switch level or at the network level.

For small office networks, every Avaya P130 switch can be managed via a Command Line Interface (CLI) or an easy-to-use Web-based device manager that provides simple, yet comprehensive monitoring and configuration.

As your enterprise network grows, Avaya P130 switches can be managed within a larger group of network devices using SMON software or Avaya Integrated Management. With an easy-to-use Web interface, Avaya Integrated Management provides management and monitoring capabilities across the entire Avaya network allowing network managers to update embedded software and switch configurations from one centralized application, minimizing the chances for errors; anytime network changes or upgrades are needed.

Avaya's standards based SMON Switch Monitoring (IETF RFC 2613) gives you enhanced monitoring of your network, so you can troubleshoot and track performance trends with ease. SMON technology uses a top-down approach to allow you to drill down from multi-switch views to individual ports giving your network

management team an unprecedented view of your switched network.



Business Rules Your Network

As your business grows, so does network congestion and infrastructure complexity. With the Avaya P130 switches, you can create and deploy business policies as needed without replacing your existing workgroup switches. Multi-layer policy management extends the capabilities of the Avaya P130 switches to meet business specific requirements needed for intensive voice, video, and data converged networks.

The Avaya P130 In Action — Applications

The Avaya P130 Workgroup Switches are the desktop access devices for an Avaya P330 backbone. The backbone links employ Gigabit Ethernet Link Aggregation to boost resilience. The inset drawing shows the Avaya P133T as a standalone workgroup switch. Using LAG connections to the server increases network redundancy and resource availability for end users.



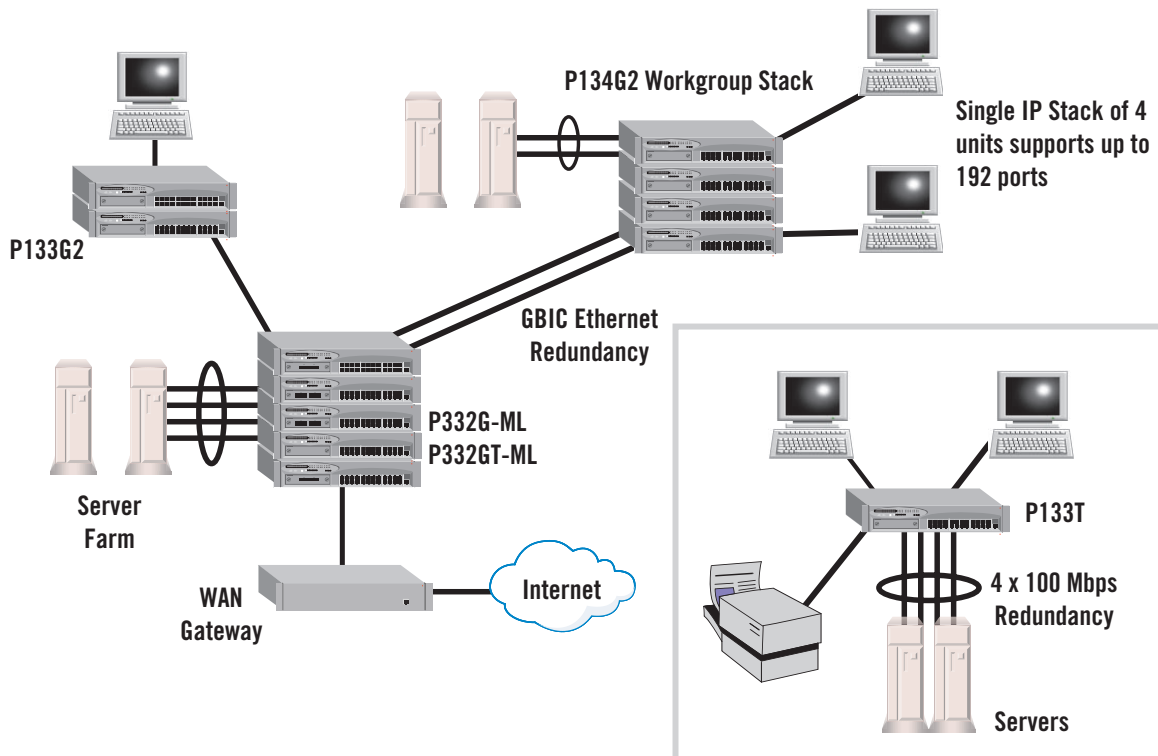
Avaya P133G2 Workgroup Switch

Service and Support Options

When it comes to servicing your network, Virtual Private Network (VPN), LAN or WAN, Avaya is focused on the only objective that really matters – helping your business excel. Whether you are looking for implementation, maintenance, or remote network management, Avaya Global Services can provide exactly the type and level of support you need. With global reach drawing upon more than 25 years of heritage in multi-vendor network support, you can count on us to meet your specific requirements.

Find Out More

For additional information on our solutions, please contact your Avaya Client Executive, Authorized BusinessPartner, or visit us at avaya.com/learnmore/data. For more information about Avaya and our other award-winning solutions, visit avaya.com





Specifications

Interfaces

<i>P133G2</i>	24 x 10/100BASE-TX 2 x GBIC SFP LC
<i>P133GT2</i>	24 x 10/100BASE-TX 2 x 100/1000BASE-T
<i>P133T</i>	24 x 10/100BASE-TX
<i>P133F2</i>	24 x 10/100BASE-TX2 x 100BASE-FX SC
<i>P134G2</i>	48 x 10/100BASE-TX2 x GBIC SFP LC

All P130 switches come with RS-232 connectivity for terminal setup/modem and PPP

Standards Supported

<i>IEEE 802.3x</i>	Flow control on all ports
<i>IEEE 802.1Q/p</i>	VLAN Tagging and priority on all ports
<i>IEEE 802.1D</i>	Spanning Tree protocol
<i>IETF</i>	MIB-II, Bridge MIB, RMON, SMON

Physical Characteristics

<i>Dimensions:</i>	2U (3.5"/88 mm) x 19" (482.6 mm) x 13.8" (350 mm)
<i>Weight</i>	<i>Avaya P133G2, Avaya P133GT2, Avaya P133T, and Avaya P133F2</i> — 11.4 lb (5.2 kg) <i>Avaya P134G2</i> — 13.2 lb (6 kg)

Environmental Conditions

<i>Operating Temp:</i>	23 to 122°F (-5 to 50°C)
<i>Humidity:</i>	5% to 95% non-condensing

Power Consumption

<i>Power Entry (AC):</i>	100-240 VAC, 1A, 50/60 Hz
<i>Power Consumption:</i>	<i>Avaya P133T</i> – 45W max. <i>Avaya P133G2, Avaya P133GT2 and Avaya P133F2</i> – 50W max. <i>Avaya P134G2</i> – 85W max.

Agency Approval

<i>EMC Emission:</i>	<i>US</i> – FCC Part 15, Subpart B, Class A <i>Europe</i> – EN55022 class A and EN61000-3-2 <i>Japan</i> – VCCI-A
<i>Immunity:</i>	Approved according to EN55024 and EN61000-3-3
<i>Safety:</i>	UL for US approved according to UL1950 Std. C-UL (UL for Canada) approved according to C22.2 No.950 Std. CE for Europe approved according to EN 60950 Std.

Ordering Information

Product	Description	Material Code
Avaya P133G2	24 10/100 BASE-T ports + 2 GBIC Workgroup Switch	108873233
Avaya P133GT2	24 10/100BASE-T ports + 2 100/1000BASE-TX Workgroup Switch	700230725
Avaya P133T	24 10/100 BASE-T ports Workgroup Switch	700214562
Avaya P133F2	24 10/100 BASE-T ports + 2 100BASE-FX Workgroup Switch	700171010
Avaya P134G2	48 10/100 BASE-T ports + 2 GBIC Workgroup Switch	700181167
X130CK	2 meters, Cascading Kit for the P130 modules with 1000BASE-X Ethernet GBIC transceivers	108873209
GBIC SFP SX Transceiver	F/O 1000 BASE-SX, SFP type GBIC transceiver for 550m (MMF)	108873241
GBIC SFP LX Transceiver	F/O 1000 BASE-LX, SFP type GBIC transceiver for 10Km (SMF)	108873258
GBIC SFP ELX Transceiver	F/O 1000 BASE-ELX, SFP type GBIC transceiver for 70Km (SMF)	700260185
Multilayer Policy License	Multilayer Policy License for one switch	108873183
Multilayer Policy Group License	Multilayer Policy group License for 1 to 25 switches	108873191
Avaya P130 SMON License	SMON License for one switch	108873167
Avaya P130 SMON Group License	SMON License for 1 to 25 switches	108873175
P330 BUPS	Backup Power Supply for P133G2 and P1334G2 only	108563339

About Avaya

Avaya enables businesses to achieve superior results by designing, building and managing their communications networks. Over one million businesses worldwide, including more than 90 percent of the FORTUNE 500®, rely on Avaya solutions and services to enhance value, improve productivity and gain competitive advantage.

Focused on enterprises large to small, Avaya is a world leader in secure and reliable IP telephony systems, communications software applications and full life-cycle services. Driving the convergence of voice and data communications with business applications – and distinguished by comprehensive worldwide services – Avaya helps customers leverage existing and new networks to unlock value and enhance business performance.

reach
AVAYA
 a higher plane
 of communication

IP Telephony

Contact Centers

Unified Communication

Services

© 2004 Avaya Inc. All Rights Reserved. Avaya and the Avaya Logo are trademarks of Avaya Inc. and may be registered in certain jurisdictions. All trademarks identified by the ® or ™ are registered trademarks or trademarks, respectively, of Avaya Inc. All other trademarks are properties of their respective owners.

Printed in the U.S.A.

09/04 • EF-MSN1624-02

